

ARIA Typhoid IgG IgM

RAPID TEST



Specific Screening Test for Salmonella typhi

Detects past and present infection

Serum / Plasma / Whole Blood

30 tests per kit



TYPHOID RAPID TEST

Intended Use: Qualitatively detects & differentiates IgG & IgM anti-Salmonella typhi & paratyphi in serum, plasma & whole blood

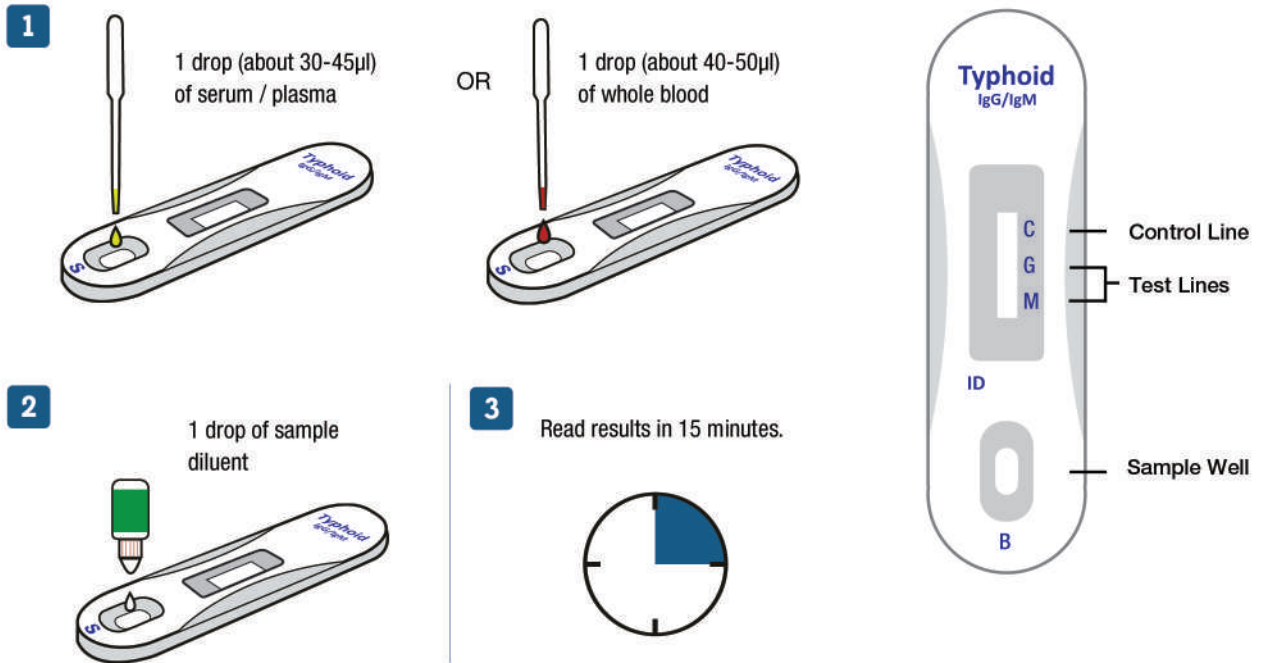
Antigen Used: Typhi and paratyphi O and H Ag

Reading Time: 15 minutes

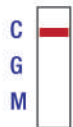
Shelf Life: 24 months

Typhoid fever and Paratyphoid fever are bacterial infections caused by Salmonella typhi and paratyphi A, B and C, which are transmitted through ingestion of tainted food and water. HIV patients are at a significantly increased risk of clinical infection and 1-5% of typhoid patients become chronic carriers harboring S. typhi in the gall bladder.

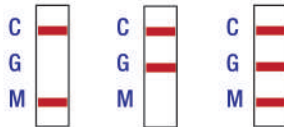
ASSAY PROCEDURE



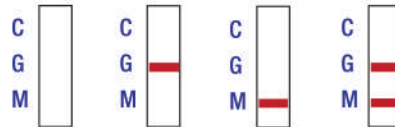
INTERPRETATION OF TEST RESULTS



NEGATIVE
Only the Control Line is visible.



POSITIVE
The Control and Test Lines are visible.



INVALID
The Control Line does not appear. The Test Line is present but the Control Line is absent.

